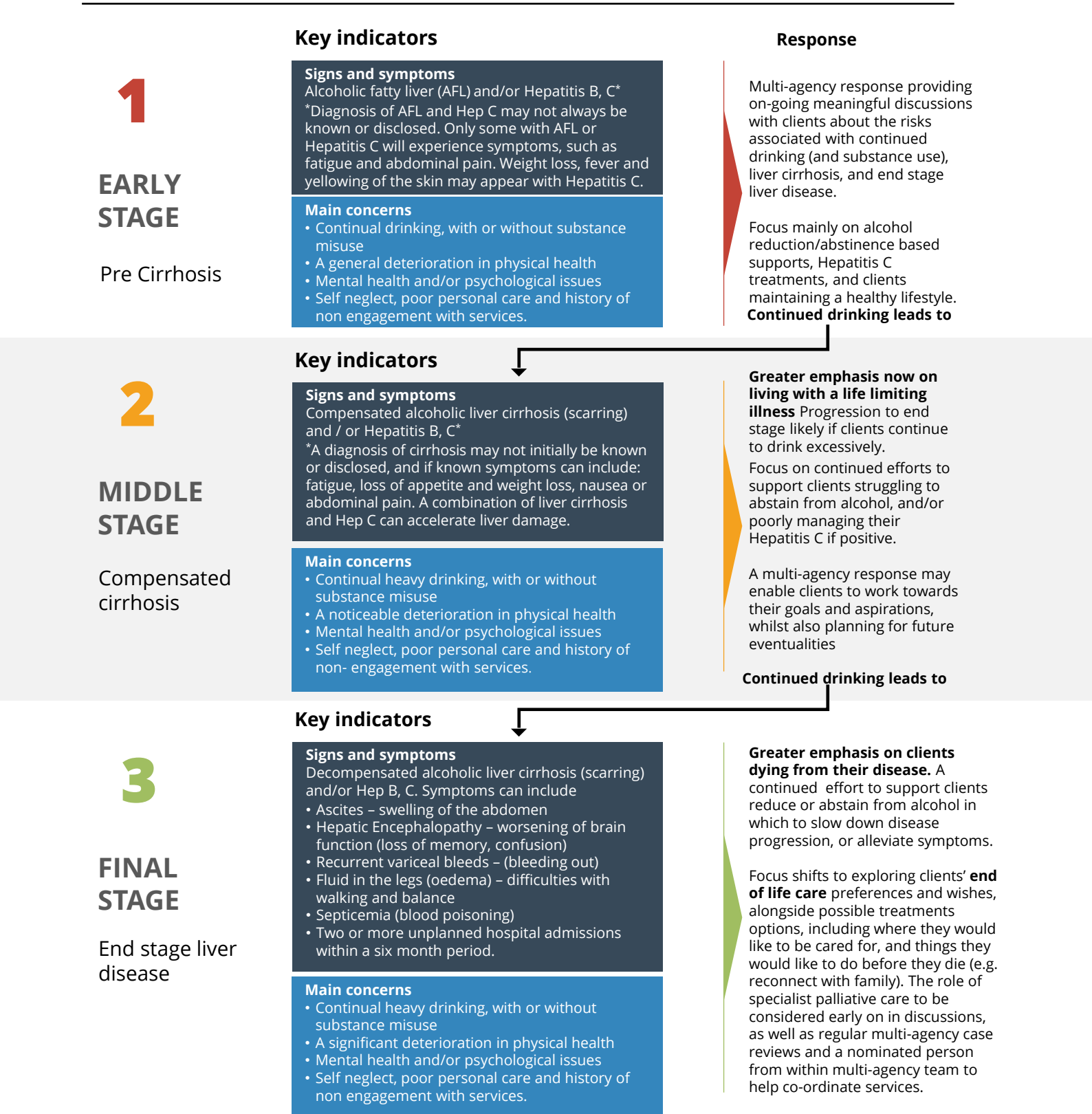


Alcohol related liver disease map

Working within the homeless sector



CORE VALUES

- A multi-agency response at every stage, offering realistic, flexible and creative supports clients can relate to and access
- Commit to an individual person centred approach to care (as opposed to one-size-fits-all)
- Initiate early interventions to allow time to build trusting relationships with clients
- Enable clients to work towards their goals and aspirations at *their* own pace, whilst also helping them plan for future eventualities
- Respect clients' choices even when trying to encourage new ones, including the choice to continue drinking despite knowing the risks
- Accepting that clients may change their minds several times, relapse more than once, or continue drinking, despite best efforts to remain well
- Provide assertive outreach for clients struggling to engage with services
- Ensure clients are appropriately followed up if moving on
- Ensure supports are in place for all frontline services that includes ongoing training and reflective practice
- Never giving up